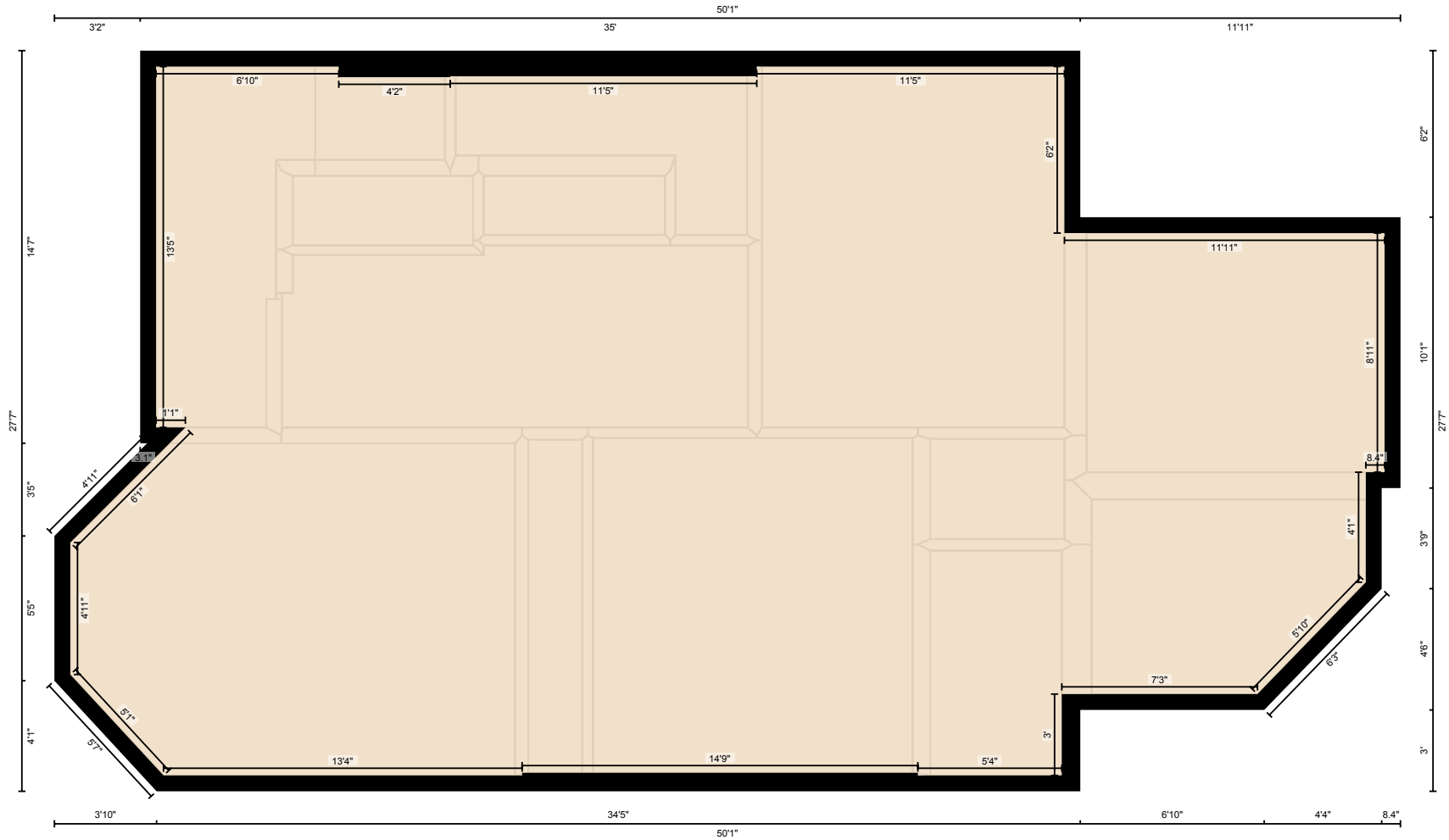


220 Powell Ave, Ottawa, ON

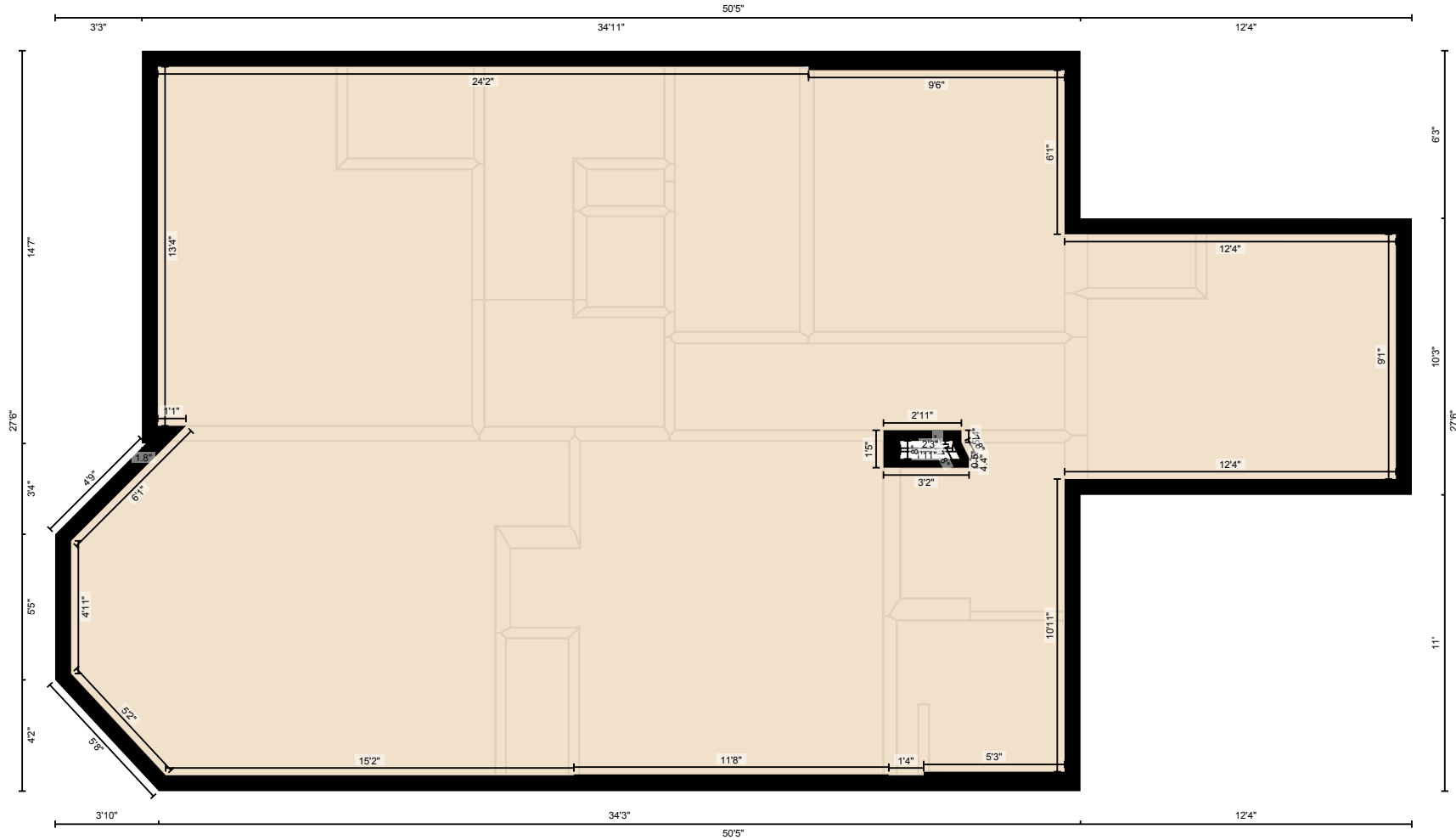
Measurement Diagram for: Main Floor



PREPARED: 2022/12/01

220 Powell Ave, Ottawa, ON

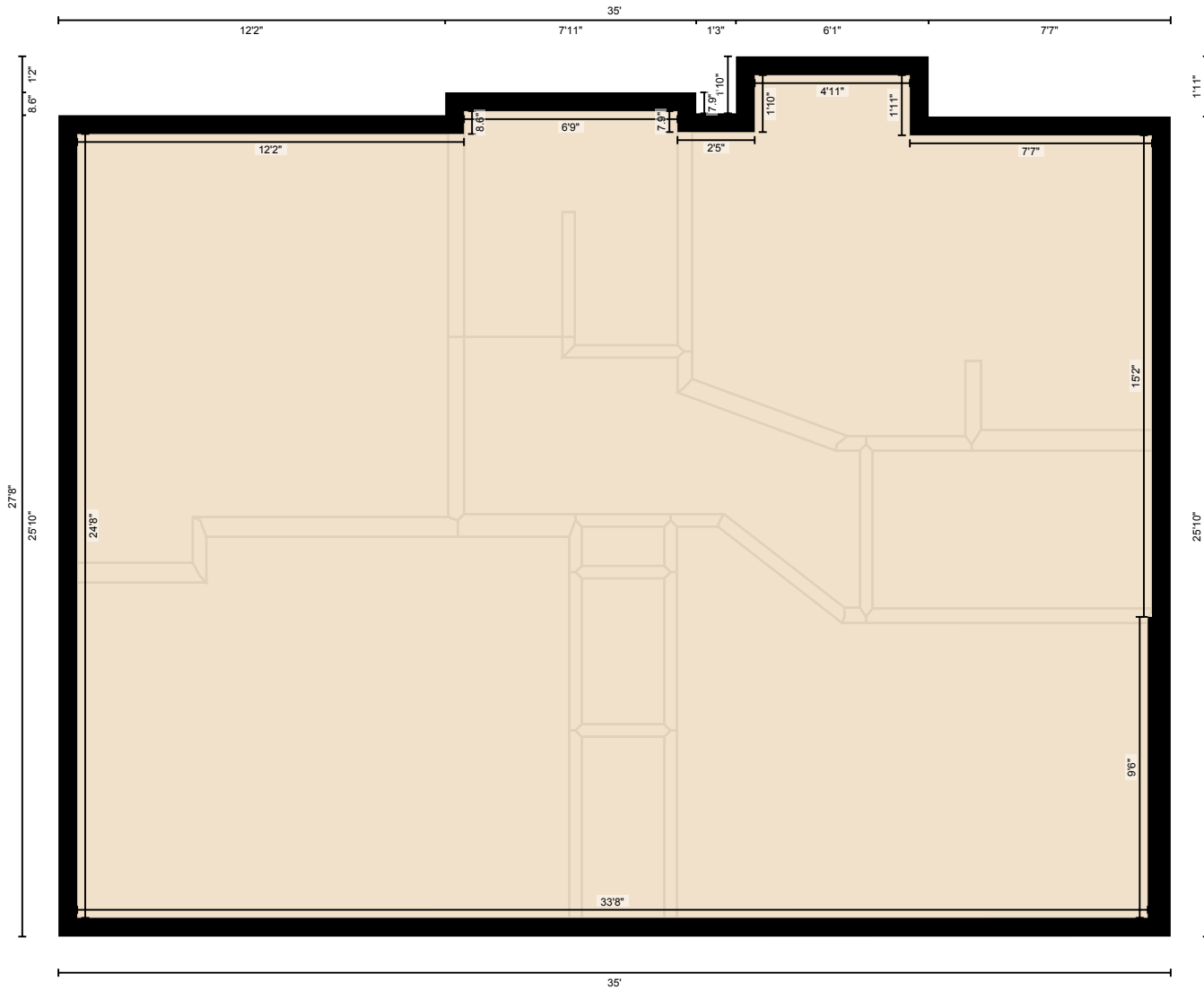
Measurement Diagram for: 2nd Floor



PREPARED: 2022/12/01

220 Powell Ave, Ottawa, ON

Measurement Diagram for: 3rd Floor



PREPARED: 2022/12/01

White regions are excluded from total floor area in iGUIDE floor plans. All room dimensions and floor areas must be considered approximate and are subject to independent verification.

